

MAXILLAIRE ETROIT

DISJONCTEUR

MULTI-ATTACHES DAMON

SANS EXTRACTION

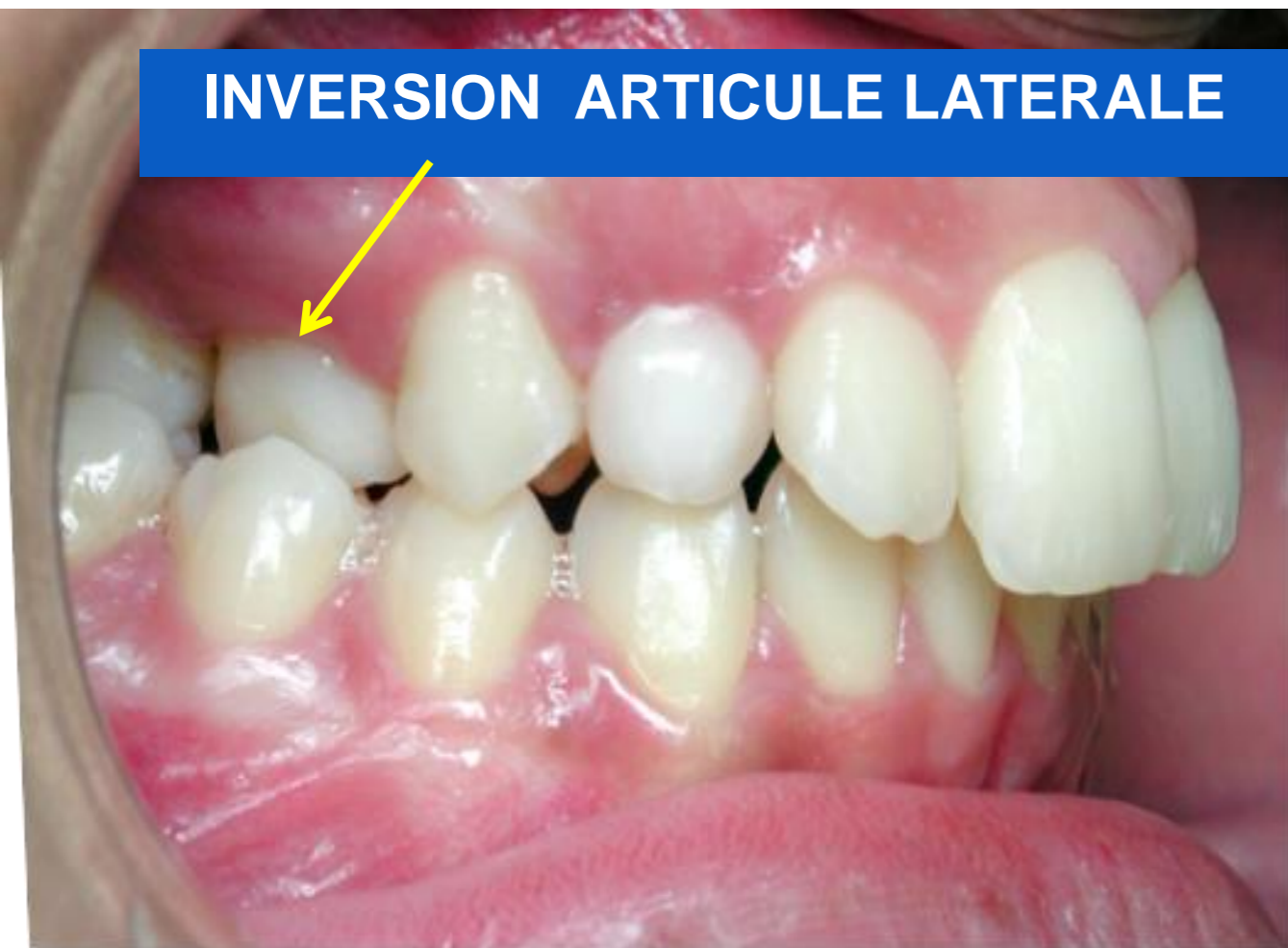
ENDOGNATHIE: ARTICULE INVERSE



INVERSION LATERALE CORRIGEE



INVERSION ARTICULE LATERALE



CORRECTION INVERSION ARTICULE

